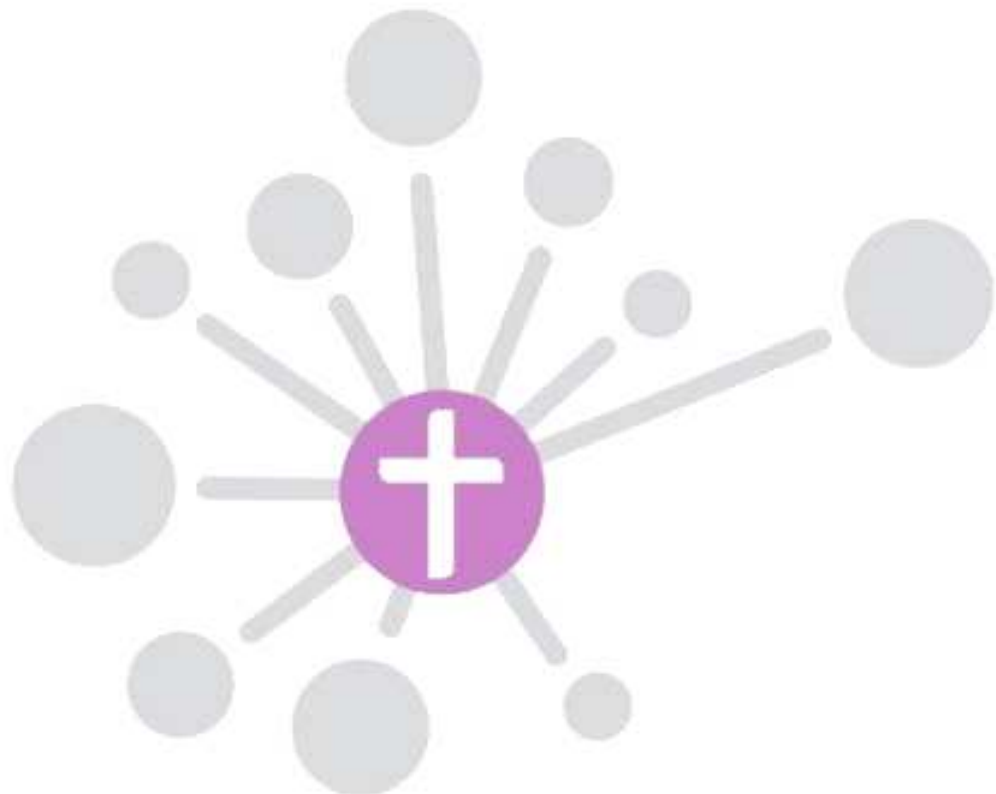

Trustees' Annual Report and Financial Statements

Emmanuel Church Bicester
Parochial Church Council

Year ended 31 December 2009



Emmanuel Church Bicester PCC 2009 Trustees' Annual Report & Financial Statements



Team Rector:
Revd Canon Theresa Scott
The Rectory, Tinkers Lane
Bicester

Team Vicar:
Revd Chris Boyce
4 Orpine Close
Bicester

Bank:
The Co-operative Bank
Skelmersdale
Greater Manchester

Independent examiner:
Mr M Baldry ACA
202 Silbury Boulevard
Central Milton Keynes

Treasurer:
Mr P Stoddart CTA
3 Hawksmead
Bicester

Emmanuel Church Bicester PCC **2009**

Trustees' Annual Report & Financial Statements

The Parochial Church Council (PCC) presents its Annual Report for the year ended 31 December 2009.

Reference and administrative information

The PCC is an excepted charity.

The address of the church office is 4 Orpine Close, Bicester OX26 3ZJ

The trustees, members of the PCC, at the time of this report, were as follows:

Trustee	Appointed	Term	Basis of appointment
The Revd Chris Boyce			Ex officio
Stan Martin, Churchwarden		1 year term	Ex officio
Andrew Collett, Churchwarden		1 year term	Ex officio
Peter Stoddart, Treasurer	(from April 2009)	1 year term	Co-opted
James Dunne, Secretary	(from April 2009)	3 year term	Elected
Carol Hill	(from April 2007)	3 year term	Elected
Peter Hill	(from April 2009)	3 year term	Elected
Ian Simpson (resigned April 2009)	(from April 2007)	3 year term	Elected
Lindsey Anderson-Gear (resigned December 2009)	(from April 2008)	3 year term	Deanery Synod representative
Andrew Collett (resigned April 2009 to become Churchwarden)	(from April 2008)	3 year term	Elected
Tony Shields	(from April 2007)	3 year term	Elected
Karen Stoddart	(from April 2008)	3 year term	Deanery Synod representative
James Dunne	(from April 2008)	3 year term	Elected
Lyn Boyce	(from April 2006)	3 year term	Elected
Michael Clarkson	(from April 2009)	3 year term	Elected
Emma Hayton	(from April 2009)	3 year term	Elected

During the year the following resigned by rotation

Peter Stoddart	Elected
Lyn Boyce	Elected

Structure, governance and management

The PCC is a corporate body. Its governing documents are the Parochial Church Council (Powers) Measure 1956 as amended and the Church Representation Rules.

PCC members are recruited in a number of ways. The clergy, churchwardens and the treasurer are members by virtue of their office. Deanery Synod representatives are elected by the annual parochial church meeting (APCM) and hold office for three years. Other members of the PCC are elected annually at the APCM or co-opted.

Emmanuel Church Bicester PCC **2009**

Trustees' Annual Report & Financial Statements

The PCC makes all decisions corporately except that the Standing Committee has delegated powers to make decisions between PCC meetings subject to keeping the PCC informed as fully as necessary.

The PCC is responsible for all parish finance, its management and control, including the appointment of a treasurer.

Members of the PCC are responsible for keeping accounting records, which disclose with reasonable accuracy the financial position of the PCC and which enable them to ascertain the financial position of the PCC and which enable them to ensure that the financial statements comply with the Charities Act 1993 and the Statement of Recommended Practice 'Accounting by Charities' 2005.

The PCC are also responsible for safeguarding the charity's assets and hence for taking reasonable steps for the prevention and detection of fraud and other irregularities. The PCC is also required to ensure that the financial statements are examined by an independent examiner or auditor prior to presentation to the Annual Parochial Church Meeting.

In preparing the financial statements, the PCC are required to:

- Select suitable accounting policies and then apply them consistently
- Make judgments and estimates that are reasonable and prudent
- Follow applicable accounting standards and statements of recommended practice, subject to any material departures disclosed and explained in the financial statements
- Prepare the financial statements on the going concern basis unless it is inappropriate to presume that the charity will remain in operation.

In addition to the PCC there are the following committees:

Standing Committee

This committee consists of the Team Vicar, the two churchwardens, PCC secretary and the treasurer. They have power to transact the business of the PCC between PCC meetings, reporting to the full PCC as appropriate.

Building, Provision & Vision Committee

This committee currently comprises the Team Minister, the churchwardens, the treasurer, Lyn Boyce, Ian Brown, Jackie Meek, Rosie Richardson, Rachel and Stephen Jolly, Tim Stratton, James Dunne and Jack Finney. During the year Ian Brown stood down – his help was very much appreciated. The purpose of the committee is to project manage the new building and to consider methods of raising funds. One of the major tasks has been the development of a business plan which will be used to target funding outside of our congregation.

Deanery

Emmanuel Church Bicester (ECB) is a conventional district within the Bicester Team, part of the Bicester & Islip Deanery, in the Diocese of Oxford.

Objectives and activities

The objectives of the PCC are defined by the Parochial Church Council (Powers) Measure 1956 as 'to co-operate with the minister in promoting in the parish the whole mission of the Church, pastoral, evangelistic, social and ecumenical'.

The main activities of the PCC are:

- the provision of regular public worship that is open to all.
- the provision of pastoral work including the visiting of the sick, the elderly and the bereaved.
- the teaching of the Christian faith through sermons, home groups, children's meetings and links with the local school.
- the promotion of the Christian faith through various events organised by the PCC.
- the support of other charities involved in Christian outreach and development.

As a church family and as individuals, ECB aims to offer worship worthy of the living God. Through worship, prayer and bible study we seek to know God better and to be conformed to His purposes for our lives. In partnership with other Christians we wish to make His love known within the local community.

Cell groups and outreach

Our cell groups are small groups which meet in people's homes during the week. Although each group has its own character, we aim to worship together; learn how to translate biblical teaching into real life change; share in each others joys and struggles and to reach out with love in our work places, neighbourhoods and families. The Home Cells meet in the daytime and evening and we are always looking to start new groups to try to meet the needs of all our members.

ECB relies on the voluntary work of so many people and the PCC very much appreciate their service to the church and the local community.

Achievements and performance

Church building project

ECB had a three year option to build a new church on a plot of land acquired by the Diocese of Oxford from the Developers of the Bure Park housing estate where ECB meets. To prevent the option lapsing and reverting to the Developer, ECB needed to have made a substantial start on the building by October 2009. The PCC committed to a contract for foundations to be laid which were completed in September 2009.

During the year the PCC sought tenders for the construction of the new building and agreed in principle to the lowest tender from Life Build Solutions Ltd of £1,298,300; this compare with the highest tender of £1,569,253.

Total building project costs to date have been in the region of £162,000 including the foundation contract with Life Build Solutions Ltd to make the substantial start (£40,313).

Donations given for the building project are held in a restricted fund. Our expenditure on building fees and the foundations contract has been met out of this fund. In addition to the restricted fund, £100,000 was designated by the PCC in 2007 for the building fund. The total building fund at 31 December 2009 was £180,081 (restricted fund £70,382 and designated fund £109,699).

Moving ECB towards becoming a Parish

ECB will be working with St Edburges on creating a parish without boundaries for ECB. We will continue to partner St Edburges in sharing the gospel and meeting the needs of the people of Bicester but will also ensure that different styles of worship and churchmanship are catered for. We anticipate this process lasting throughout 2010 but would expect our parish to be established early in 2011.

Christians Against Poverty

As a church we continue to support the national charity Christians Against Poverty (CAP). During the year five people attended a CAP Money course. The course takes place over three weeks and helps people get to grips with their money by concentrating on budgeting and practical financial management. In addition our Money Coaches have dealt with a number of individuals on a one-to-one basis where more structured support was required. CAP is part of a longer term plan by ECB to establish a debt counselling centre in Bicester.

Alpha

We continue to run the Alpha course as one of our main means of evangelism. Alpha attendees are encouraged to join the existing ECB Cell Groups to continue with their Christian development. During 2009 one Alpha group was held.

Youth and Children

Youth and Children are a very important part of the life of ECB. Led by our experienced team we provide a variety of groups and activities.

Girls and Boys Cells – meet regularly for girls and boys aged 12+. The girl's group now has a membership of 12-14 and the boys one is starting to grow from an initial group of 6. The two cells meet together monthly at Faithbook which is also an opportunity for the young people to hear from other adults within the church.

Sunday Club - runs every Sunday for ages 3- 15 yr olds during the morning service (except All Age Services).

Crèche - is held for ages 3 and under during the service every Sunday (except All Age Services).

Our apprentice Youth Worker, Darrel Eaton helps run a number of structured events within local secondary schools as well as informal outreach to the local community.

Music and worship

The worship team have led the church in worship both during regular Sunday services and other events such as Carols in the Pub and the Carol Service where they put together a choir. Members of the team have regularly attended conferences at Worship Central which have encouraged and inspired them. Members of the music team have also joined with musicians from other churches for joint events.

The Bicester Food Bank

The Food Bank continues to support people in our community who are experiencing hardship, acting as a short term bridge for people in crisis and giving us the opportunity to share our faith in a practical way. This ministry is shared by many churches in Bicester and the surrounding villages. The majority of gifts are made in kind but monetary donations are also made to help cover the running costs of project. Our thanks go to Janet Ray and her team of volunteers for all of their hard work with the Food Bank. In 2009 the Food Bank was established as charity in its own right; ECB continues to support The Bicester Food Bank through regular donations of food and money.

Marriage course

Andrew and Jeanette Collett continue to run the Holy Trinity Brompton sponsored course for ECB. It is hoped that these will be available to the wider community as well as church members.

Fairtrade

ECB continues to be committed to being a Fairtrade Church. Both Traidcraft and Created (formally Tearcraft) goods are available at regular events. ECB members are involved in the group bidding for Fairtrade Town status

for Bicester. Fairtrade activities serve to raise awareness of the need for trade justice to transform the lives of disadvantaged producers in the developing world.

Sri Lanka

ECB continues to support a church of around 30 people, in Negombo, Sri Lanka and its leader, Sriyamal Fernando. The church is on the west coast of Sri Lanka just north of Colombo.

Healing on the Streets

Stan Martin has been responsible for coordinating this project which involved about 70 people from a number of Bicester churches being trained in Feb 2009. Since then the team have been offering a Christian healing ministry on the main shopping street in Bicester every Saturday.

Electoral roll and Sunday attendance

Electoral roll

The overall electoral roll did not change during the year and remains at 96. One person joined the electoral role and one person has been removed from the electoral role.

Sunday attendance

The average attendance on Sundays was 63 adults and 21 children. Sunday services follow a pattern of Informal Worship with Sunday Club for the children except for the first Sunday of the month when Paul Hayton and his team provide an All Age Service. Holy Communion is celebrated on the last Sunday of each month.

Financial review

The majority of our income is received through tax efficient giving schemes; as a result we have been able to recover an additional £29,192 from HM Revenue & Customs during the year. During the year the majority of our congregation gave to ECB through regular planned giving (standing order, envelope scheme, payroll giving etc). Having a regular income is vital to enable ECB to continue supporting the vision we have for our congregation and community.

Our total funds decreased by £22,283 from £225,720 to £203,438. The majority of this decrease is as a result of starting work on our building project. General funds show an increase for the year of £4,799 to £23,357. Designated funds have increased by £2,118 to £109,699. Restricted funds have decreased by £29,199 to £70,382.

The decrease in interest rates on savings returns has had an impact on the investment income in 2009. However, we will continue to maintain our deposits in short term guaranteed fixed rate bonds as we need easy access to funds to finance the building project.

Grants

The PCC aims to give to other organisations involved in mission in the UK and overseas or involved in humanitarian relief and development work at least 10% of its unrestricted income each year. During the year the PCC made charitable grants of 9.3% of unrestricted income compared with 18% in 2008.

Risk assessment

During the year the PCC has reviewed all the risks faced by the charity and has put in place measures aimed at managing those risks.

Reserves Policy

The PCC aims to maintain general reserves at such a level that working capital is maintained at a level equivalent to approximately two months general fund expenditure.

Approved by the PCC and signed on its behalf by

The Revd C Boyce
Chairman
29 March 2010

Independent Examiner's Report to Emmanuel Church Bicester Parochial Church Council

I report on the accounts of the charity for the year ended 31 December 2009, which are set out on pages 10 to 19.

Respective responsibilities of the PCC and examiner

The charity's trustees, the PCC, are responsible for the preparation of the accounts. The PCC consider that an audit is not required for this year under section 43(2) of the Charities Act 1993 (the 1993 Act) and that an independent examination is needed.

It is my responsibility to:

- examine the accounts under section 43 of the 1993 Act;
- follow the procedures laid down in the General Directions given by the Charity Commissioners under section 43(7)(b) of the 1993 Act; and
- state whether particular matters have come to my attention.

Basis of an independent examiner's report

My examination was carried out in accordance with the general Directions given by the Charity Commission. An examination includes a review of the accounting records kept by the charity and a comparison of the accounts presented with those records. It also includes consideration of any unusual items or disclosures in the accounts, and seeking explanations from you as the charity's trustees concerning any such matters. The procedures undertaken do not provide all the evidence that would be required in an audit and, consequently, no opinion is given as to whether the accounts present a 'true and fair view' and the report is limited to those matters set out in the statement below.

Independent examiner's statement

In connection with my examination, no matter has come to my attention:

- (1) which gives me reasonable cause to believe that in any material respect the requirements:
 - to keep accounting records in accordance with section 41 of the 1993 Act; and
 - to prepare accounts which accord with the accounting records and comply with the accounting requirements of the 1993 Act have not been met; or

- (2) to which, in my opinion, attention should be drawn in order to enable a proper understanding of the accounts to be reached.

Mathew Baldry - ACA
Chartered Accountant
202 Silbury Boulevard
Milton Keynes
MK9 1LW

Emmanuel Church Bicester PCC **2009**

Trustees' Annual Report & Financial Statements

Statement of financial activities for the year ended 31 December 2009

2008 £	Notes	Unrestricted funds £	Designated funds £	Restricted funds £	Total £
Incoming resources					
157,792	Voluntary income	79,106	-	134,574	213,680
2,163	Activities for generating funds	1,560	-	-	1,560
6,385	Investment income	106	2,118	37	2,261
166,340	Total incoming resources	80,772	2,118	134,611	217,500
Resources expended					
Cost of generating funds					
2,578	Fundraising costs	1,236	-	-	1,236
76,059	Charitable activities	65,247	-	151,237	216,489
-	Governance costs	175	-	-	175
2,895	Support costs	1,801	-	5,433	7,234
9,117	Grants made	7,513	-	7,135	14,649
90,648	Total resources expended	75,973	-	163,809	239,782
75,692	Net incoming/(outgoing) resources before transfers	4,799	2,118	(29,199)	(22,282)
-	Gross transfers between funds	-	-	-	-
75,692	Net incoming/(outgoing) resources before other recognised gains/(losses)	4,799	2,118	(29,199)	(22,282)
	Other recognised gains/(losses)	-	-	-	-
75,692	Net movement in funds	4,799	2,118	(29,199)	(22,282)
150,028	Total funds brought forward	18,558	107,581	99,581	225,720
225,720	Total funds carried forward	23,357	109,699	70,382	203,438

Emmanuel Church Bicester PCC **2009**

Trustees' Annual Report & Financial Statements

Balance sheet as at 31 December 2009

2008 £		Notes	Unrestricted funds £	Designated funds £	Restricted funds £	Total £
	Fixed assets					
3,280	Tangible assets	9	1,441	-	-	1,441
-	Investments	10	-	-	-	-
3,280	Total fixed assets		1,441	-	-	1,441
	Current assets					
22,880	Debtors	11	11,423	-	5,734	17,157
200,547	Cash in hand and at bank		12,318	109,699	64,648	186,665
223,427	Total current assets		23,741	109,699	70,382	203,822
	Creditors: amounts falling due within one year					
987		12	1,825	-	-	1,825
222,440	Net current assets		21,915	109,699	70,382	201,996
225,720	Net assets		23,357	109,699	70,382	203,438
	Funds of the church					
	Unrestricted funds					
18,558	General fund	15	23,357	-	-	23,357
107,581	Designated fund	14	-	109,699	-	109,699
126,139			23,357	109,699	-	133,055
99,581	Restricted funds	13	-	-	70,382	70,382
-	Endowment fund	13	-	-	-	-
225,720	Total funds of the church		23,357	109,699	70,382	203,438

The Revd C Boyce
Chairman

Mr S Martin
Churchwarden

Notes to the accounts

Basis of preparation

The financial statements have been prepared in accordance with the Church Accounting Regulations 2006, the Charities Act 1993, applicable accounting standards and the Statement of Recommended Practice "Accounting and Reporting by Charities" (revised 2005) (SORP 2005).

The accounts are drawn up under the historical cost convention as modified by the inclusion of investment assets at market value. The accounts include all transactions, assets and liabilities for which the PCC is responsible in law. These accounts do not include the accounts of church groups that owe their main affiliation to another body nor those that are informal gatherings of church members.

Accounting policies

Funds

Unrestricted funds are general funds available for the general objectives of the church.

Designated funds are unrestricted funds that have been set aside by the PCC for particular purposes.

Restricted funds can only be used for the purposes for which they have been given, within the objectives of the PCC. The cost of raising and administering such funds are charged against those specific funds. The aim and use of each fund is explained later in the Notes.

Incoming resources

All incoming resources are included in the Statement of Financial Activities (SOFA) when the church becomes legally entitled to the income and when the amount can be quantified with reasonable certainty.

Collections are recognised when received by or on behalf of the PCC. Planned giving is recognised only when received. Grants and legacies are recognised as soon as the PCC becomes aware of its legal entitlement and the amount due is quantifiable with reasonable certainty.

Income tax recoverable on gift aid donations is accounted for when the gift is received, not when the tax refund is received.

When incoming resources have related expenditure (as with fundraising income) the incoming resources and the related resources expended are accounted for gross in the SOFA.

Gifts in kind are accounted for at a reasonable estimate of their value to the PCC or the amount actually realised. Gifts in kind for use by the PCC are included in the SOFA as incoming resources when receivable.

Dividends and interest are accounted for when receivable and includes any recoverable tax.

Resources expended

Expenditure is included on an accruals basis and is recognised when there is a legal or constructive obligation to pay for goods or services.

All costs have been directly attributed to the various categories within the SOFA.

Any general support costs have been allocated across activity cost categories on a basis consistent with the use of resources based on an allocation of actual costs.

As the PCC is not VAT registered, VAT cannot be reclaimed and all expenditure is shown inclusive of VAT.

Governance costs include the cost of the preparation of the annual accounts, the cost of PCC meetings and the legal cost of advice on governance or constitutional matters.

Grants and charitable giving are accounted for when paid over or when awarded, if the award creates a binding obligation on the PCC, provided that there are no conditions to be met relating to the grant which remain in the control of the PCC.

Parish Share is accounted for when paid except that any Parish Share unpaid at the end of the financial year is provided for in the accounts as a constructive obligation, although not a liability, and is included in the balance sheet as a liability.

Fixed assets

All capital expenditure in excess of £500, for a single item or a group of similar items, is capitalised.

Depreciation is provided on all tangible fixed assets at rates calculated to write off the cost evenly over the expected useful economic life of assets as follows: Furniture, fittings and equipment - 5 years, Motor Vehicles - 3 years.

Both realised and unrealised gains are shown under 'other recognised gains/(losses)' section of the SOFA.

Emmanuel Church Bicester PCC **2009**

Trustees' Annual Report & Financial Statements

3 Analysis of incoming Resources

2008		Unrestricted	Designated	Restricted	Total
£		£	£	£	funds
					£
	Incoming resources from generated funds				
	Voluntary income				
	Recurring income:				
32,025	Tax - efficient planned giving (excl. tax)	53,013	-	-	53,013
3,989	Collections of loose cash at services	3,407	-	-	3,407
2,399	Other planned giving (bankers order and payroll)	365	-	-	365
738	Other individual donations	5,831	-	-	5,831
8,857	Tax recovered	14,966	-	-	14,966
-	Church boxes	-	-	-	-
48,009		77,582	-	-	77,582
	Non-recurring income:				
9,706	Bicester Food Bank	-	-	167	167
77,754	Building Fund	-	-	118,560	118,560
175	NEXUS sponsorship	-	-	-	-
50	CAP donations	-	-	321	321
	King Revival Church	-	-	1,300	1,300
511	Other	1,523	-	-	1,523
21,312	Tax recovered - Building fund	-	-	13,973	13,973
14	Tax recovered - CAP fund	-	-	71	71
140	Tax recovered - Food Bank	-	-	-	-
-	Tax recovered - Kings Revival Church	-	-	183	183
121	Tax recovered - General fund	-	-	-	-
157,792		79,106	-	134,574	213,680
	Activities for generating funds				
2,116	Fairtrade stall	1,534	-	-	1,534
47	Bookstall	26	-	-	26
2,163		1,560	-	-	1,560
	Investment income				
476	Bank interest - general funds	106	-	-	106
69	Bank interest - Youth Work	-	-	-	-
5,771	Bank interest - Building fund	-	2,118	36	2,154
69	Bank interest - Food Bank	-	-	1	1
6,385		106	2,118	37	2,261

Emmanuel Church Bicester PCC **2009**

Trustees' Annual Report & Financial Statements

4 Analysis of resources expended

2008		Unrestricted	Designated	Restricted	Total funds
£		£	£	£	£
	Cost of generating funds				
	Fundraising costs				
2,578	Traidcraft stock	1,236	-	-	1,236
<u>2,578</u>		<u>1,236</u>	<u>-</u>	<u>-</u>	<u>1,236</u>
	Charitable activities				
369	Alpha	23	-	-	23
81	Bank charges	79	-	-	79
7,366	Bicester Food Bank	-	-	-	-
11,820	Building project	-	-	150,431	150,431
13	Christians against poverty	83	-	392	475
865	Children's Work	1,207	-	-	1,207
5,004	Church running costs	1,588	-	-	1,588
602	Depreciation	896	-	415	1,310
300	Bicester Fun Day	300	-	-	300
-	Healing on the Streets	2,416	-	-	2,416
210	Insurance	128	-	-	128
2,382	JPCC contribution (stationery & clergy expenses)	2,684	-	-	2,684
291	Music and worship costs	401	-	-	401
34,800	Parish Share	43,511	-	-	43,511
2,081	Premises costs	2,636	-	-	2,636
-	Spring Harvest	100	-	-	100
14,733	Youth Work	9,196	-	4	9,200
1,000	Ministry support gift	-	-	-	-
(5,858)	Christians against poverty appeal	-	-	-	-
-	NEXUS course fees	-	-	-	-
<u>76,059</u>		<u>65,146</u>	<u>-</u>	<u>151,241</u>	<u>216,489</u>
	Governance costs				
-	Audit fee	175	-	-	175
<u>-</u>	Support costs	<u>-</u>	<u>-</u>	<u>-</u>	<u>-</u>
<u>-</u>		<u>175</u>	<u>-</u>	<u>-</u>	<u>175</u>

5 Support costs

2008 £		Unrestricted £	Designated £	Restricted £	Total funds £
159	Computer equipment & supplies	-	-	-	-
35	Data protection	-	-	-	-
10	Employment manual	10	-	-	10
53	Equipment costs	(646)	-	-	(646)
173	Equipment maintenance	-	-	-	-
253	PAYE & employers NI	233	-	-	233
399	Software	187	-	-	187
110	Printing & stationery	688	-	-	688
1,703	Wages	1,330	-	5,433	6,762
2,895		1,801	-	5,433	7,234

6 Trustee remuneration and expenses

No members of the PCC received any remuneration for their work on the PCC. The vicar, who is an ex officio member does receive a stipend but is not remunerated for his service on the PCC. No PCC members claimed expenses although they would be entitled to claim travel costs for attending meetings.

7 Audit fee - none

8 Grants made

2008		Unrestricted	Designated	Restricted	Total funds
£	Grants were made to the following institutions:	£	£	£	£
	Home missions				
650	Bicester Food Bank	2,870	-	5,652	8,522
-	Bicester Rural Deanery	10	-	-	10
300	Care For The Family	300	-	-	300
300	Christians Against Poverty	300	-	-	300
662	Discretionary Fund	700	-	-	700
-	Church Urban Fund	100	-	-	100
-	Love Bicester	100	-	-	100
1,000	Oxford Chinese Church - building fund	-	-	-	-
100	Other	-	-	-	-
175	The Seed Barn	75	-	-	75
-	Church overseas				
1,200	Africa Inland Mission	-	-	-	-
1,200	Barnabas Fund	-	-	-	-
600	Smile	-	-	-	-
2,830	Kings Revival Church - Sri Lanka	2,547	-	1,483	4,030
	Humanitarian relief				
100	Traidcraft	12	-	-	12
-	Christian Aid	500	-	-	500
9,117		7,513	-	7,135	14,649

No grants were made to individuals. However a number of short-term repayable grants were made to a number of families – see note 11 for more information.

9 Tangible fixed assets

	Freehold land & buildings £	Fixtures fittings & equipment £	Motor vehicles £	Total £
Cost or valuation				
At 1 January 2009	-	897	2,985	3,882
Additions	-	1,545	-	1,545
Revaluations	-	-	-	-
Disposals	-	-	(2,073)	(2,073)
At 31 December 2009	<u>-</u>	<u>2,442</u>	<u>912</u>	<u>3,354</u>
Depreciation				
At 1 January 2009	-	105	498	602
Charge for year	-	896	415	1,310
Disposals	-	-	-	-
At 31 December 2009	<u>-</u>	<u>1,000</u>	<u>912</u>	<u>1,913</u>
Net book value				
At 1 January 2009	<u>-</u>	<u>793</u>	<u>2,487</u>	<u>3,280</u>
At 31 December 2009	<u>-</u>	<u>1,441</u>	<u>-</u>	<u>1,441</u>

10 Investment assets - none

11 Debtors and prepayments

	Amounts falling due within one year	
	2009	2008
	£	£
Accrued income - tax refund due	9,807	16,884
Prepayment - Insurance	91	-
Prepayment - Degree Fees	1,403	-
Christians Against Poverty - discretionary grants	3,516	4,550
	<u>14,818</u>	<u>21,434</u>
	Amounts falling due after one year	
	2009	2008
	£	£
Christians Against Poverty - discretionary grants	-	1,447
Prepayment - Degree Fees	2,339	-
	<u>2,339</u>	<u>1,447</u>

Short-term repayable grants were made to a number of families during the year. The grants are being repaid in accordance with terms agreed with the recipient and the PCC.

12 Creditors and accruals

	Amounts falling due within one year	
	2009	2008
	£	£
PAYE	5	(13)
Accruals - School hall hire	720	-
Accruals - Oxford Chinese Church	1,000	-
Accruals - donations	100	1,000
	<u>1,825</u>	<u>987</u>

No amounts were due in more than one year.

13 Restricted funds

	Fund balances brought forward £	Incoming resources £	Resources expended £	Transfers £	Fund balances carried forward £
Bicester Food Bank	5,899	168	(6,067)	-	-
CAP funds	-	392	(392)	-	-
Kings Revival Church - Sri Lanka	-	1,483	(1,483)	-	-
Building fund	93,678	132,568	(155,864)	-	70,382
Youth work	4	-	(4)	-	-
	99,581	134,611	(163,809)	-	70,382

14 Designated fund

	Fund balances brought forward £	Incoming resources £	Resources expended £	Transfers £	Fund balances carried forward £
Building fund	107,581	2,118	-	-	109,699

15 General fund

	Fund balances brought forward £	Incoming resources £	Resources expended £	Transfers £	Fund balances carried forward £
General Fund	18,558	80,772	(75,973)	-	23,357